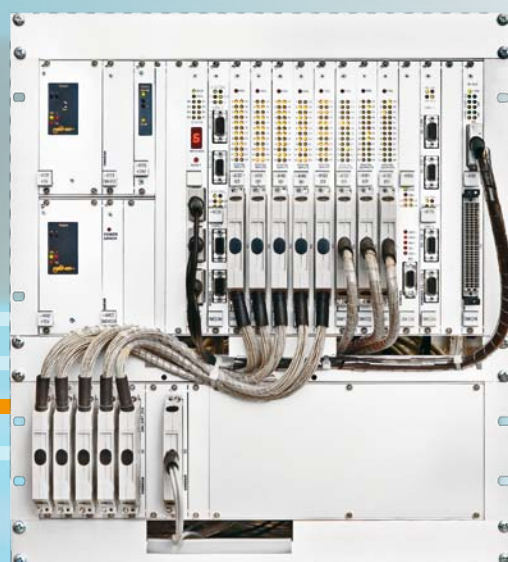


KONTRAC Vehicle control unit for the electric multiple unit, type VCU/EMU



VCU/EMU is the main control system, based on proprietary modular HW/SW components, that controls all intelligent units in the vehicle. It is responsible for control, measuring, sequencing, protection, supervision and communication. There are two VCU/EMUs installed in the vehicle, enabling appropriate level of redundancy.

KONTRAC Vehicle control unit for the electric multiple unit, type VCU/EMU

Basic features:

- modular design developed using proprietary durable HW/SW platform decreases maintenance costs
- supports safety-critical real time functions
- fail-safe mode of operation
- supports communication with MMIs and more than 40 intelligent units in the vehicle
- 4 CAN/CANopen interfaces
- 2 RS485 interfaces
- 1 general purpose microprocessor
- 4 microcontrollers
- 1 digital signal processor
- remote diagnostic functions
- programming IDE, based on block-diagrams, facilitating the development of vehicle application program



Processing units embedded in the central computer

KONČAR

KONČAR - Electrical Engineering Institute Inc.

Fallerovo šetalište 22, 10000 Zagreb, Croatia
phone: +385 1 3667 315, fax: +385 1 3667 309
e-mail: info@koncar-institut.hr
www.koncar-institut.hr